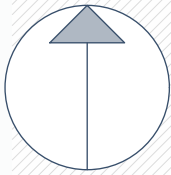
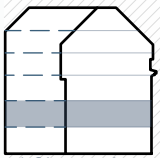


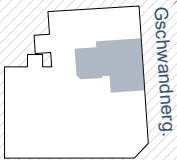
Mayssengasse 22  
1170 Wien



Norden

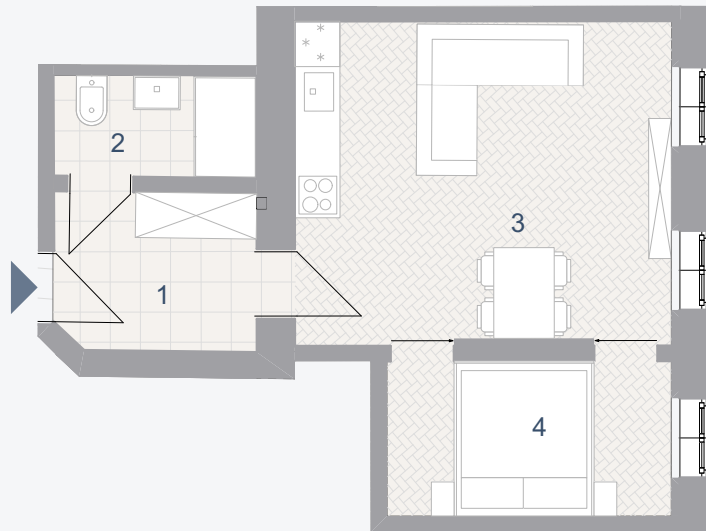


1. Obergeschoss



Maysseng.

Schwandnerg.



## TOP 08

Wohnnutzfläche: 38,11 m<sup>2</sup>

1	Vorraum	5,58	m <sup>2</sup>
2	Bad/WC	3,60	m <sup>2</sup>
3	Wohnküche	21,23	m <sup>2</sup>
4	Kabinett	7,70	m <sup>2</sup>