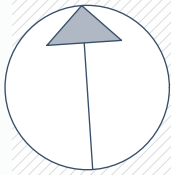
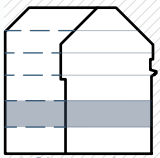


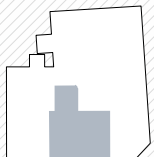
Mayssengasse 22  
1170 Wien



Norden

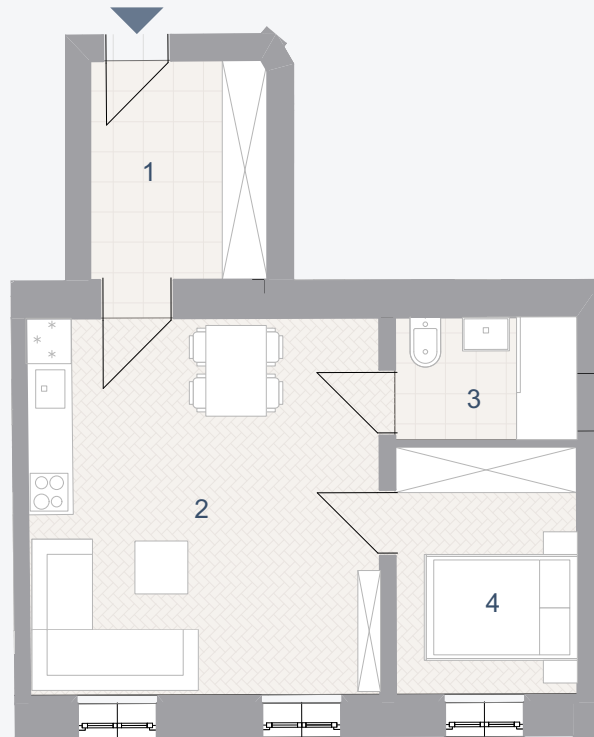


1. Obergeschoss



Maysseng.

Geschwandnerg.



## TOP 06

Wohnnutzfläche: 41,83 m<sup>2</sup>

1	Vorraum	6,83	m <sup>2</sup>
2	Wohnküche	23,23	m <sup>2</sup>
3	Bad/WC	3,91	m <sup>2</sup>
4	Kabinett	7,86	m <sup>2</sup>