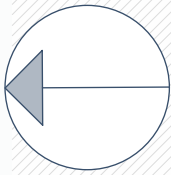
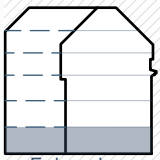


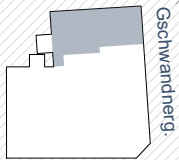
Mayssengasse 22
1170 Wien



Norden

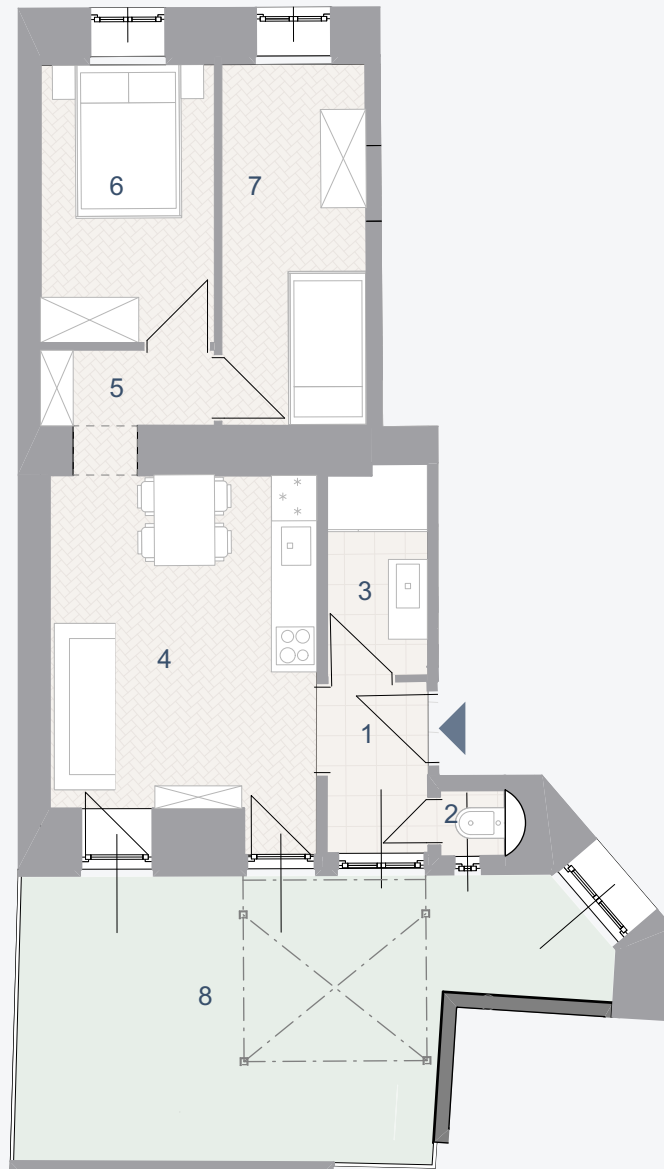


Erdgeschoss



Maysseng.

Schwandnerg.



TOP 04

Wohnnutzfläche: 43,58 m²
Garten: 23,38 m²

1	Vorraum	2,97	m ²	5	Vorraum	2,30	m ²
2	WC	0,93	m ²	6	Kabinett	8,45	m ²
3	Bad	3,59	m ²	7	Kabinett	9,17	m ²
4	Wohnküche	16,17	m ²	8	Garten	23,38	m ²