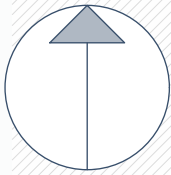
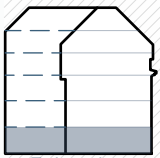


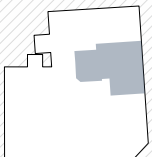
Mayssengasse 22  
1170 Wien



Norden

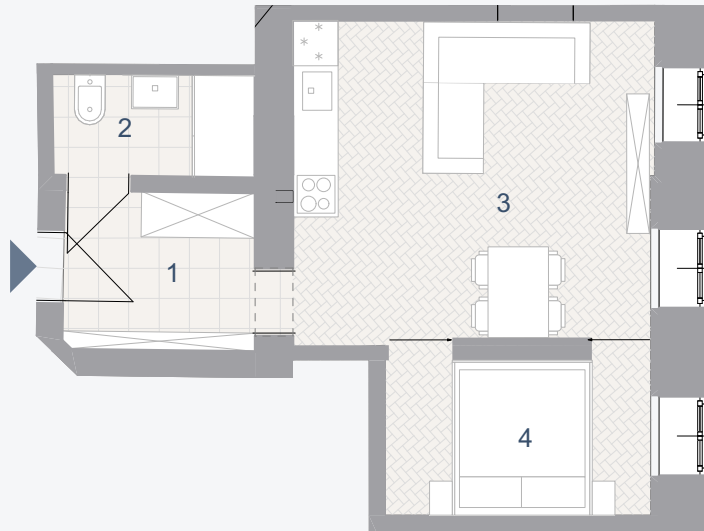


Erdgeschoss



Maysseng.

Gschwarzenbergg.



## TOP 03

Wohnnutzfläche: 36,36 m<sup>2</sup>

1	Vorraum	5,32	m <sup>2</sup>
2	Bad/WC	3,58	m <sup>2</sup>
3	Wohnküche	20,27	m <sup>2</sup>
4	Kabinett	7,19	m <sup>2</sup>