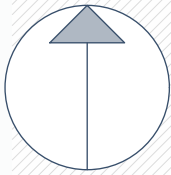
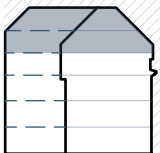


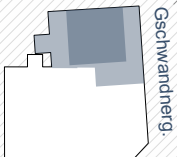
Mayssengasse 22
1170 Wien



Norden

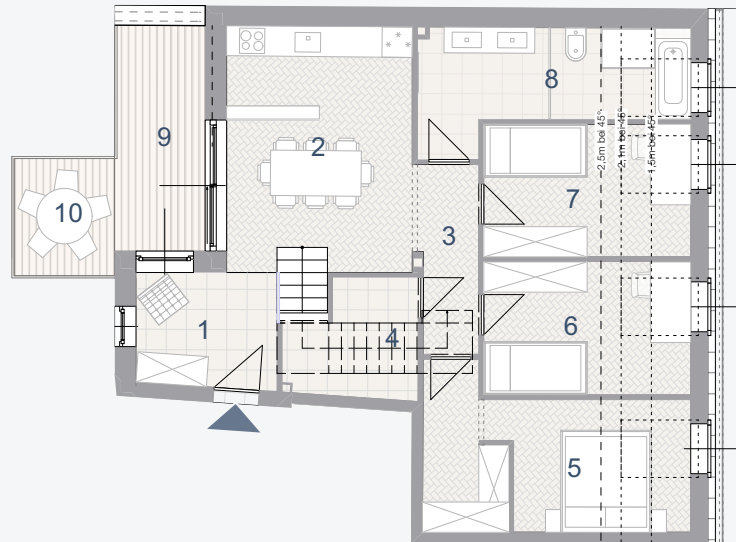


1. & 2. Dachgeschoss

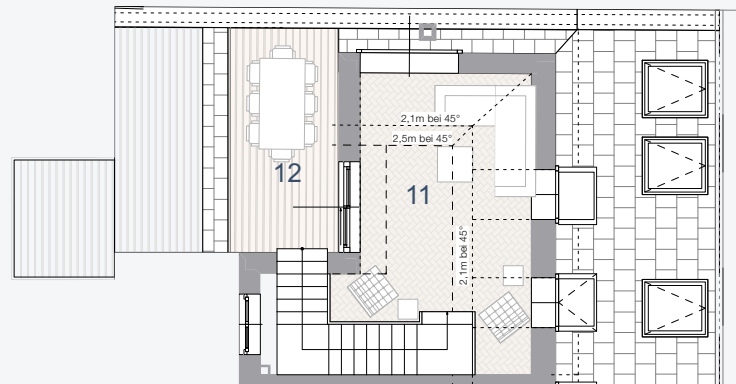


Maysseng.

Schwarzenbergg.



1. Dachgeschoss



2. Dachgeschoss

TOP 21

Wohnnutzfläche: 111,03 m²

Freifläche: 22,28 m²

1	Vorraum	6,35	m ²	7	Zimmer	11,20	m ²
2	Wohnküche	18,00	m ²	8	Bad/WC	10,75	m ²
3	Vorraum	4,14	m ²	9	Terrasse	8,05	m ²
4	Abstellraum	6,26	m ²	10	Balkon	4,66	m ²
5	Zimmer	15,28	m ²	11	Wohnzimmer	27,85	m ²
6	Zimmer	11,20	m ²	12	Terrasse	9,57	m ²