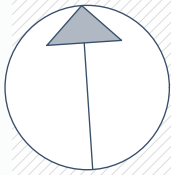
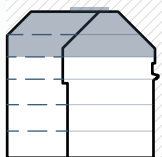


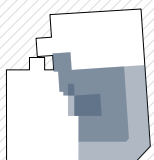
Mayssengasse 22
1170 Wien



Norden

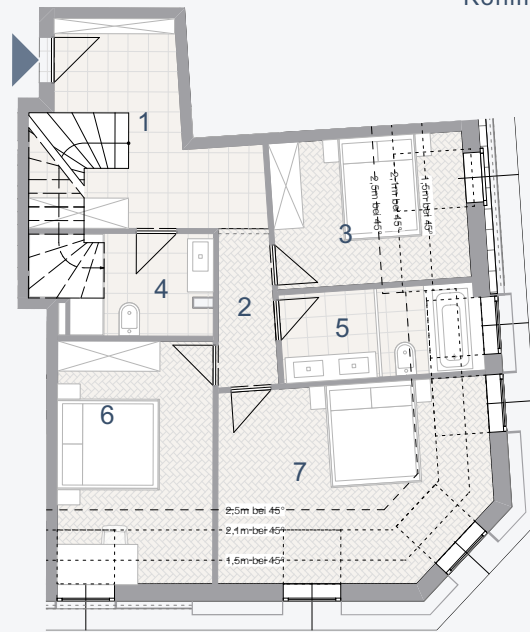


1. & 2. Dachgeschoss
+ Dachterrasse

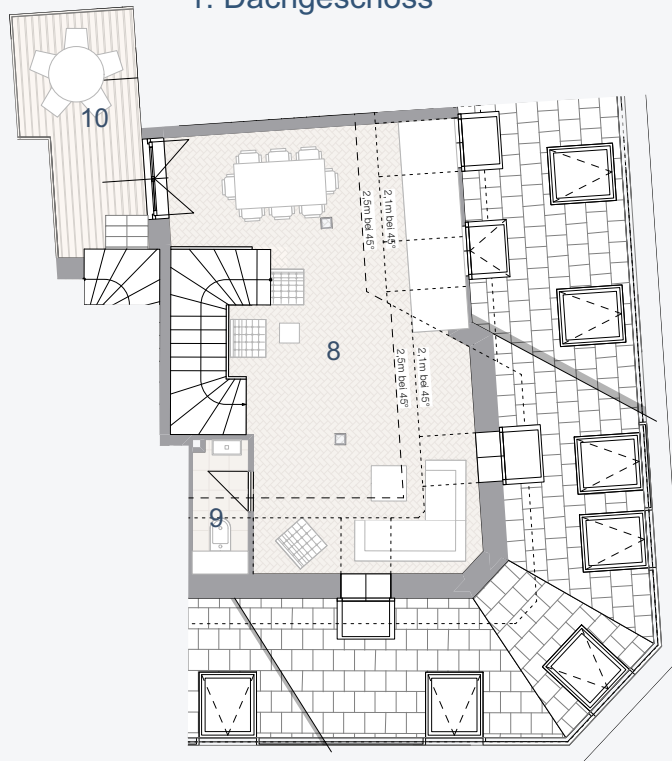


Maysseng.

Schwandberg.



1. Dachgeschoss



2. Dachgeschoss

Dachterrasse

TOP 20

Wohnnutzfläche: 136,66 m²
Freifläche: 20,75 m²

1	Vorraum	13,64	m ²	7	Zimmer	20,26	m ²
2	Vorraum	3,34	m ²	8	Wohnküche	55,06	m ²
3	Zimmer	11,65	m ²	9	Bad/WC	4,05	m ²
4	Bad/WC	6,75	m ²	10	Terrasse	9,59	m ²
5	Bad/WC	7,04	m ²	11	Dachterrasse	11,16	m ²
6	Zimmer	14,87	m ²				