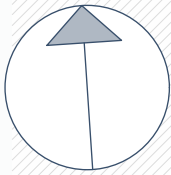
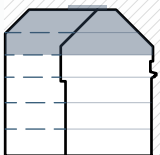


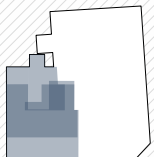
Mayssengasse 22  
1170 Wien



Norden

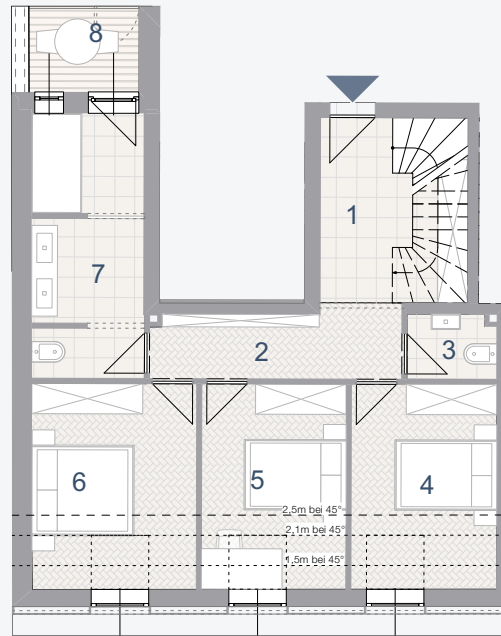


1. & 2. Dachgeschoss  
+ Dachterrasse

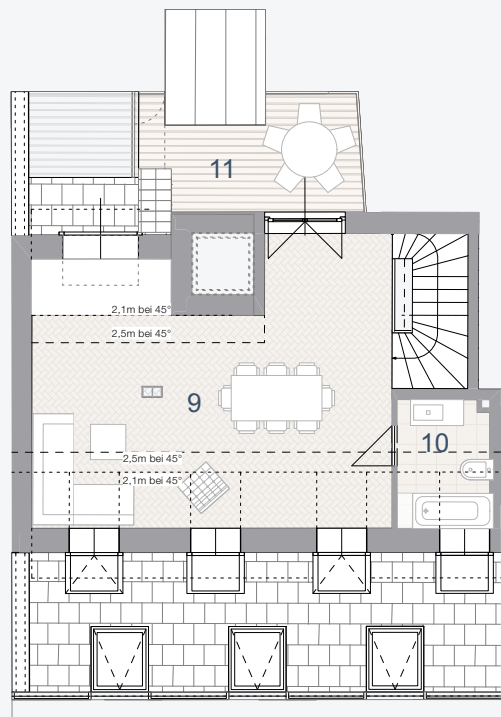


Maysseng.

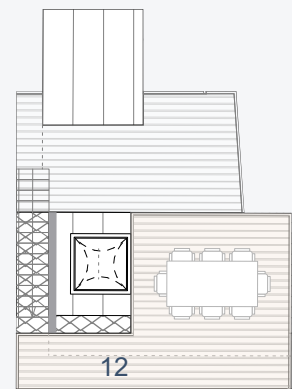
Gschwandtnerg.



1. Dachgeschoss



2. Dachgeschoss



Dachterrasse

## TOP 19

Wohnnutzfläche: 121,11 m<sup>2</sup>

Freifläche: 25,51 m<sup>2</sup>

1	Vorraum	10,24	m <sup>2</sup>	7	Bad/WC	11,57	m <sup>2</sup>
2	Vorraum	6,62	m <sup>2</sup>	8	Terrasse	3,61	m <sup>2</sup>
3	WC	2,26	m <sup>2</sup>	9	Wohnküche	47,21	m <sup>2</sup>
4	Zimmer	11,74	m <sup>2</sup>	10	Bad/WC	6,49	m <sup>2</sup>
5	Zimmer	11,67	m <sup>2</sup>	11	Terrasse	8,91	m <sup>2</sup>
6	Zimmer	13,31	m <sup>2</sup>	12	Dachterrasse	12,99	m <sup>2</sup>