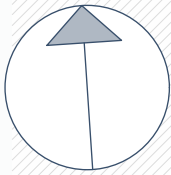
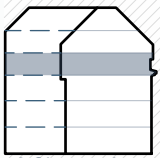


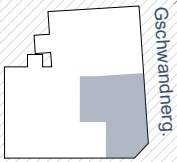
Mayssengasse 22
1170 Wien



Norden

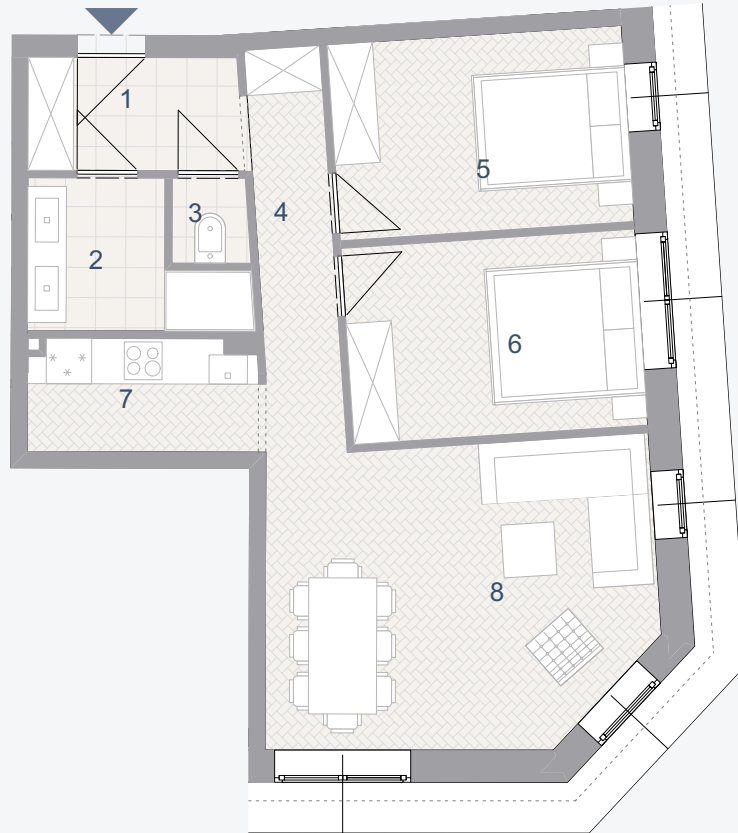


3. Obergeschoss



Maysseng.

Gschwandberg.



TOP 17

Wohnnutzfläche: 59,95 m²

1	Vorraum	4,20	m ²	5	Zimmer	10,13	m ²
2	Bad	4,60	m ²	6	Zimmer	10,12	m ²
3	WC	1,13	m ²	7	Küche	4,49	m ²
4	Vorraum	5,45	m ²	8	Wohnzimmer	19,83	m ²