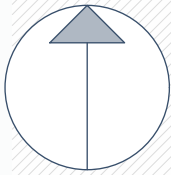


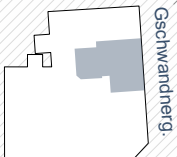
Mayssengasse 22  
1170 Wien



Norden

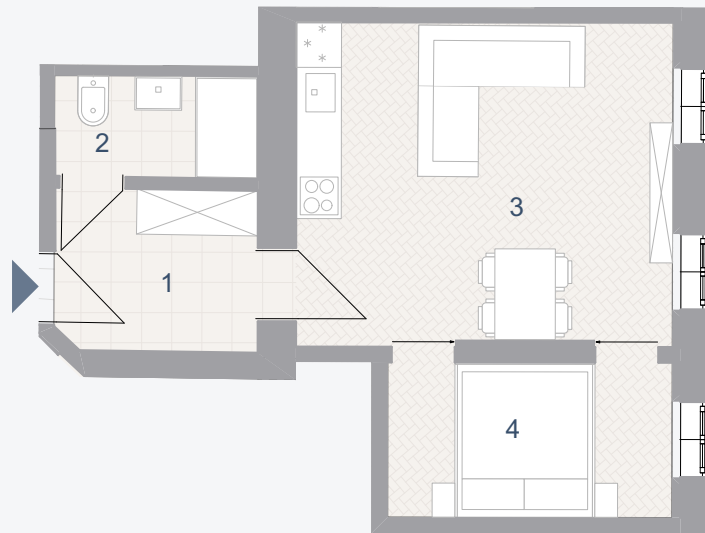


2. Obergeschoss



Maysseng.

Gschwandnerg.



## TOP 13

Wohnnutzfläche: 38,27 m<sup>2</sup>

1	Vorraum	5,74	m <sup>2</sup>
2	Bad/WC	3,60	m <sup>2</sup>
3	Wohnküche	21,23	m <sup>2</sup>
4	Kabinett	7,70	m <sup>2</sup>