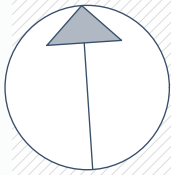


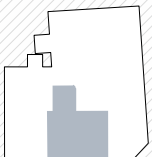
Mayssengasse 22
1170 Wien



Norden

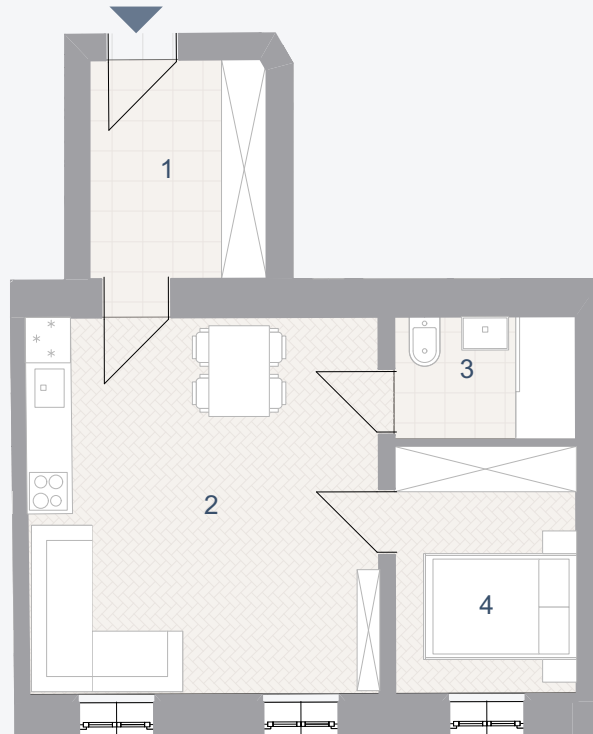


2. Obergeschoss



Maysseng.

Geschwandnerg.



TOP 11

Wohnnutzfläche: 41,83 m²

1	Vorraum	6,83	m ²
2	Wohnküche	23,23	m ²
3	Bad/WC	3,91	m ²
4	Kabinett	7,86	m ²