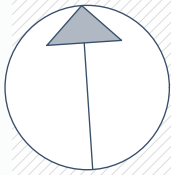


Mayssengasse 22
1170 Wien



Norden

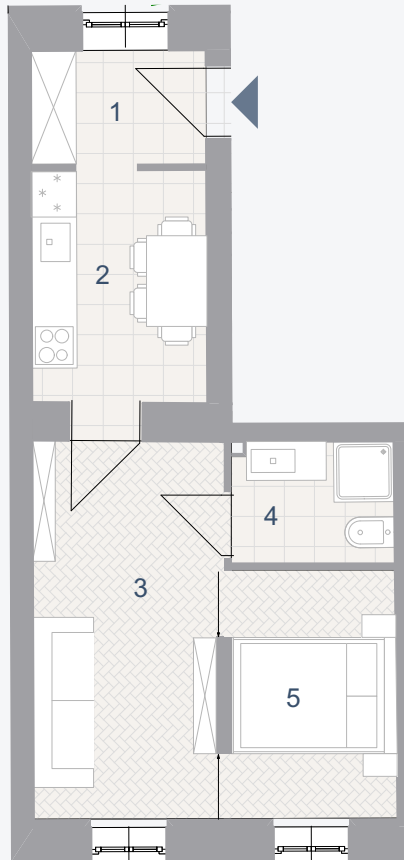


2. Obergeschoss



Schwandnerg.

Maysseng.



TOP 10

Wohnnutzfläche: 33,70 m²

1	Vorraum	3,48	m ²
2	Küche	7,12	m ²
3	Wohnzimmer	12,46	m ²
4	Bad/WC	3,46	m ²
5	Kabinett	7,18	m ²