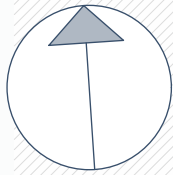
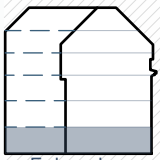


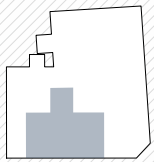
Mayssengasse 22  
1170 Wien



Norden

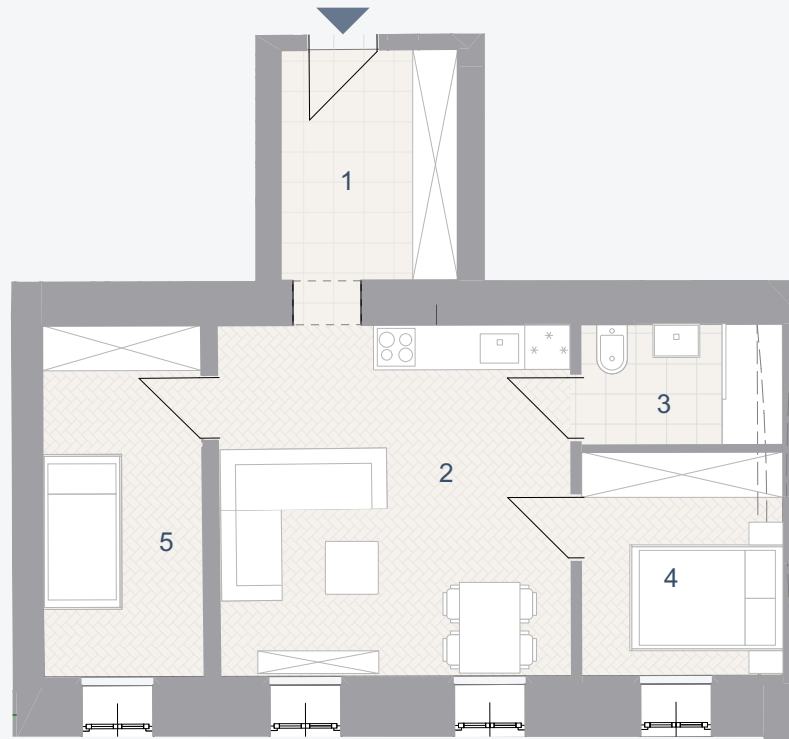


Erdgeschoss



Maysseng.

Gschwandnerg.



## TOP 01

Wohnnutzfläche: 50,86 m<sup>2</sup>

1	Vorraum	7,19	m <sup>2</sup>
2	Wohnküche	21,68	m <sup>2</sup>
3	Kabinett	9,90	m <sup>2</sup>
4	Kabinett	7,84	m <sup>2</sup>
5	Bad/WC	4,25	m <sup>2</sup>